



مؤسسة معالم القلعة التجارية  
CASTLE LANDMARK TRADING EST.

**MAKE YOUR  
DREAM TO LUXURY REALITY**

Company Profile | Castle Landmarks 2025







## About CASTLE LANDMARKS

Our journey

Our Achivment

Core Values, Mission & Vision

Our Services

Our Products

Our Wrokshop

Consultation, design & Production

KITCHEN DESIGN

BEDROOM DESIGN

WARDROBE DESIGN

VANITY DESIGN

LIVING ROOM DESIGN

TV UNIT & COFFEE CORNER

HAPPY ENDING



مؤسسة معالم القلعة التجارية  
CASTLE LANDMARK TRADING EST.



مؤسسة معالم القلعة التجارية  
CASTLE LANDMARK TRADING EST.



## INTRODUCTION





# ABOUT CASTLE LANDMARKS

“

CASTLE LANDMARKS was first called Gulf Landmarks, **back in 2018**, over the years, the once was called Gulf group interior, re branded to CASTLE LANDMARKS interior. Serves in the field of contractor and interior design with an aim to introduce opportunities for those craving to express creativity without boundaries.

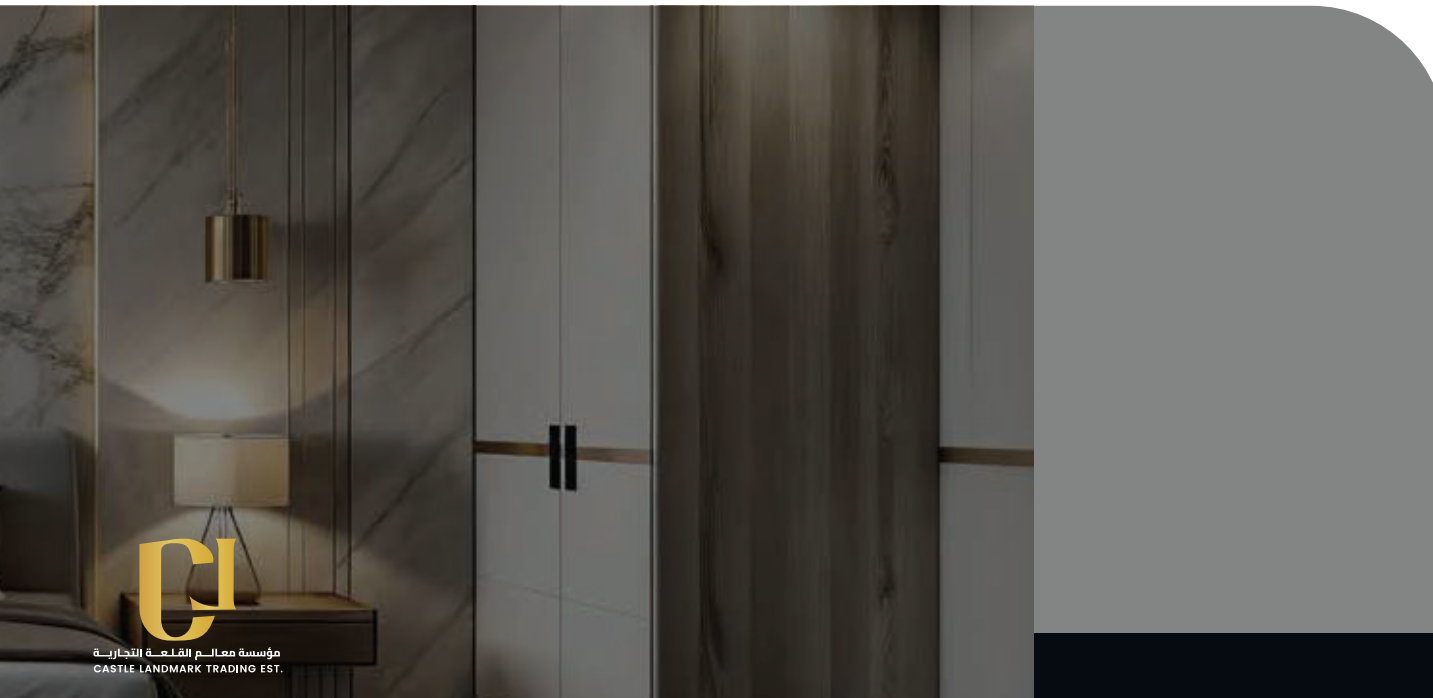
With the base of trust, dependability, quality, curiosity, and customer satisfaction, CASTLE LANDMARKS becomes one of the best consultant choices for those seeking "out of the box" ideas and design. With **over 700 clients** along the years ranging from residential, commercials, and offices, CASTLE LANDMARKS has proven to be the one-stop solution for interior design.

“Our creative company aims to be the first choice in the interior design sector of Saudi Arabia. Through the successful implementation of our vision,

we continue to build our company on strength, expertise, creativity, and determination to deliver excellence. This inspires our clients to trust us and benefit from our innovative designs and services.

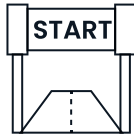


**MOHAMMAD ALQURAINY**  
Chairman



مؤسسة معالم القلعة التجارية  
CASTLE LANDMARK TRADING EST.

## OUR JOURNEY



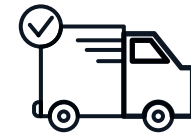
2018

Started in 2018, CASTLE was first called Gulf landmarks, and has gone through some major changes. Starting from creating custom made furniture in a small workshop to having its own workshop.



2019

In 2019, CASTLE has its very first workshop in qatif for building all its interior needs. CASTLE LANDMARKS has gathered over 100 projects ranging from small projects like renovation to building whole project from zero.



2020

Due to high demands in 2020 and also the size of the workshop in Latumenten not suitable enough, CASTLE began to move its workshop to bigger factory and has been there ever since. In the same year, Gulf landmarks re branded itself to CASTLE for more simplicity in brand.



## OUR JOURNEY



2021 - 2022

Starting from 2021 to 2022, numerous big projects were handled by CASTLE from projects such as to big projects like commercial, residential coffe, houses, offices , etc.



2023

Throughout the years, CASTLE has activated its online presence and generated a lot of interest in the interior world. CASTLE achieved a new milestone in 2023 where it reached over 500 projects and has become the one stop solution for all interior needs. Currently, CASTLE has majorly been focusing on residential projects due to both the high demand in public and a much more demanding challenge



2024-NOW



مؤسسة معالم القامة التجارية  
CASTLE LANDMARK TRADING EST.





## OUR ACHIVEMENT



**+700**

### SATISFIED CLIENTS

We've had the privilege of serving over 700 clients who've trusted us to transform their spaces into havens of style and functionality.



**+20**

### EXPERT ENGINEER

Our team boasts 20 skilled engineers who bring innovation and precision to every design, ensuring structural integrity and stunning aesthetics.



**+25**

### TECHNICIANS

With a team of 25 dedicated technicians, we ensure that every aspect of our projects, from installation to finishing touches, is executed with care and excellence.



**+600**

### SUCCESSFUL PROJECTS

Having successfully completed over 600 projects, we've honed our craft, delivering exceptional results that exceed expectations.



مؤسسة معالم القلعة التجارية  
CASTLE LANDMARK TRADING EST.



## Vision and Mission

We Want to be the most sought builders and interior design consultancy that sets a trend in the society

01

Be a trustworthy also dependable builder and interior designer that strives for perfection.

02

We focus on final quality and providing the best service to all customer.

03

We create a dynamic concept to arouse curiosity in the society.

03

We open more job opportunities to those seeking for creative trends.

## Core Values



### Quality

CASTLE LM commits to build and create masterpiece with perfection at every touch, flawless without compromises



### Dependability

Every project will be tailored based on customer's need, timely made as promises since it started



### Curiosity

Nothing can halt CASTLE LM team to innovate and explore dynamic ideas, creating trends that excites both customers and society as a whole

# OUR SERVICES

01

**Survey/Site Visit:** Before designing a project, CASTLE Land M. guarantees accuracy in the making, thus each project will be carefully measured during survey.



05

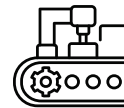
**Drawing Works:** Technical drawing is done by our drafter in order for it to be given to the project managers in charge on the field..



02



**Consultation:** In order to fulfill client's needs, our interior designers do a regular consultation to know what's needed to be designed and built.



**Manufacturing :** Our Manufacturing offers state of the art manufacturing capabilities with advanced machinery and skilled work force to produce high-quality products with precision and efficiency

06

03

**Planning:** This is where the design concept is discussed, starting from budgeting, layout, flooring, to lighting.



07

**Delivery & Installation:** Delivery & installation is the main power of engagement with our Clients. We are committed to our clients on delivery & installation and we have proudly already achieved that.



04



**3D Modeling:** After all the planning is done, comes the 3D modeling, where our interior designers put in all their creativity to use, not just from creativity, but the ease of its design



**Customer Service & Maintenance:** Experience unparalleled customer service and maintenance support with our dedicated team. From initial inquiries to ongoing care, we're committed to ensuring your satisfaction and the longevity of your investment.

08

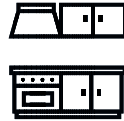


# OUR PRODUCTS



01

**Kitchen:** Our kitchens are renowned for their quality and craftsmanship. We take pride in creating spaces that not only look stunning but are also highly functional, making cooking and entertaining a joy.



05

**Living Room:** The living room is where you gather with family and friends, so it should be both inviting and functional. Our designs strike the perfect balance, creating a space that is both beautiful and comfortable.



**Bedroom:** Your bedroom is your personal retreat, and we strive to make it as comfortable and stylish as possible. Our designs are tailored to your needs, ensuring a space that reflects your personality and provides the relaxation you deserve.

02

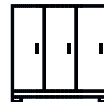


**TV Unite :** A TV unit should not only hold your television but also enhance the overall look of your living room. Our designs are sleek and modern, providing both style and functionality.

06

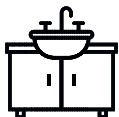
03

**Wardrobe:** Our wardrobe designs are known for their elegance and practicality. We understand the importance of storage in a bedroom, and our designs maximize space while enhancing the overall look of the room.



07

**Coffee Corner:** A well-designed coffee corner can add charm to any home. Our designs are tailored to your space and style, creating a cozy spot for your daily dose of caffeine.



**Washbasin:** A washbasin is a focal point in any bathroom, and our designs are sure to impress. We offer a range of styles to suit every taste, all crafted with the highest quality materials.

04



**Interior Deesign:** A At CASTLE LANDMARKS, we are committed to providing our customers with the best service possible. Our team of experienced designers and craftsmen will work closely with you to bring your vision to life, ensuring that every detail is perfect.

08

# OUR PARTNERS

 **EGGER**

 **DEKTON®**

 **blum®**

 **HÄFELE**

designed with  
 **CORIAN®**  
SOLID SURFACE

 **saviola**

 **SAPIENSTONE**  
dress your kitchen

 **HMP**



مؤسسة معالم القامة التجارية  
CASTLE LANDMARK TRADING EST.



## We Do Consultation

CASTLE LANDMARKS provides you with free consultation regarding your design preference, thus everything will be tailored based on your needs.



## We Do Design

Home is the core of a family, therefore we believe each and every single design should be flawless to create value for the family.



## We Do Production

From Kitchen design to Custom Built in Furniture, we turn these ideas of designs into a reality to realize your dream home.





## OUR PROCECCING

**Our workshop is purposely made to fulfill all of our client's interior needs. CASTLE LAND MAR furniture is fully customizable. Years of experience allow us to deliver the highest quality in product and project in time and worth the spend.**



مؤسسة معالم القلعة التجارية  
CASTLE LANDMARK TRADING EST.

# OUR PROCECCING





## PROJECT **SAUDI ARAMCO**

“ We don't just design spaces,  
we create landmarks inside your home.



مؤسسة معالم القلعة التجارية  
CASTLE LANDMARK TRADING EST.



## PROJECT **SAUDI ARAMCO**

“

We don't just design spaces,  
we create landmarks inside your home.



مؤسسة معالم القلعة التجارية  
CASTLE LANDMARK TRADING EST.

## PROJECT **SAUDI ARAMCO**

“

Every detail we craft is meant to inspire,  
last, and live with you.”



مؤسسة معالم القلعة التجارية  
CASTLE LANDMARK TRADING EST.



Project

# ARAMCO DRIVING SCHOOL



مؤسسة معالم القلعة التجارية  
CASTLE LANDMARK TRADING EST.

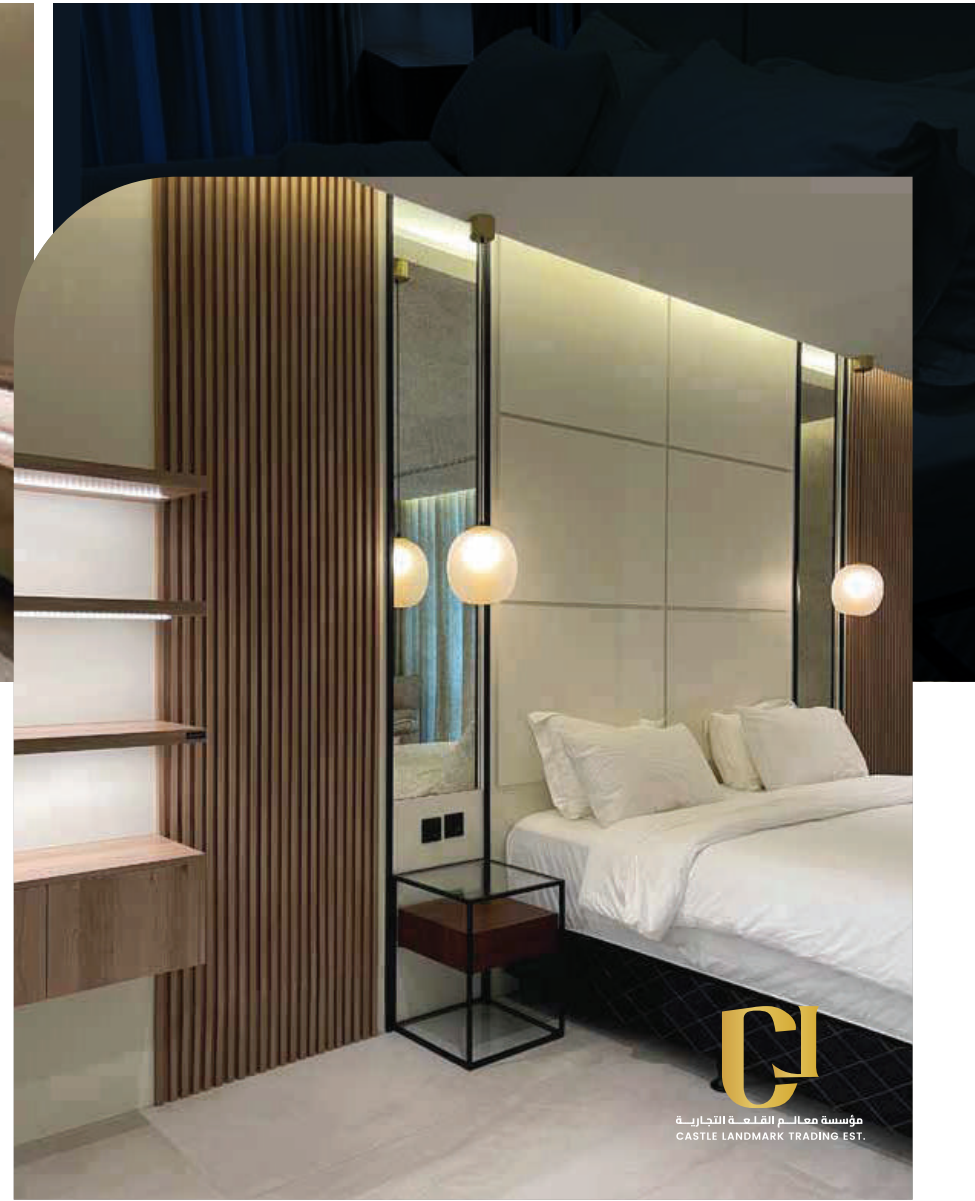
## PROJECT NO. 403, KHOBAR

“

Every detail we craft is meant to inspire,  
last, and live with you.”

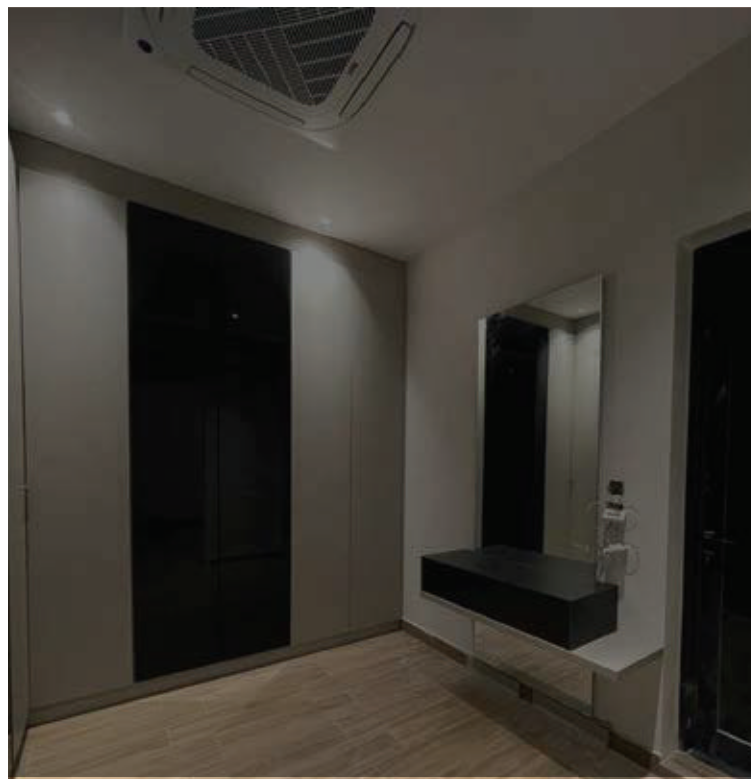


The final result was a bedroom that served as a true sanctuary of relaxation and style, perfectly aligned with Castle Landmarks' mission of turning interiors into landmarks of design and living.





# PROJECT NO. 472, SAIHAT WARDROBE DESIGN



Scen Me

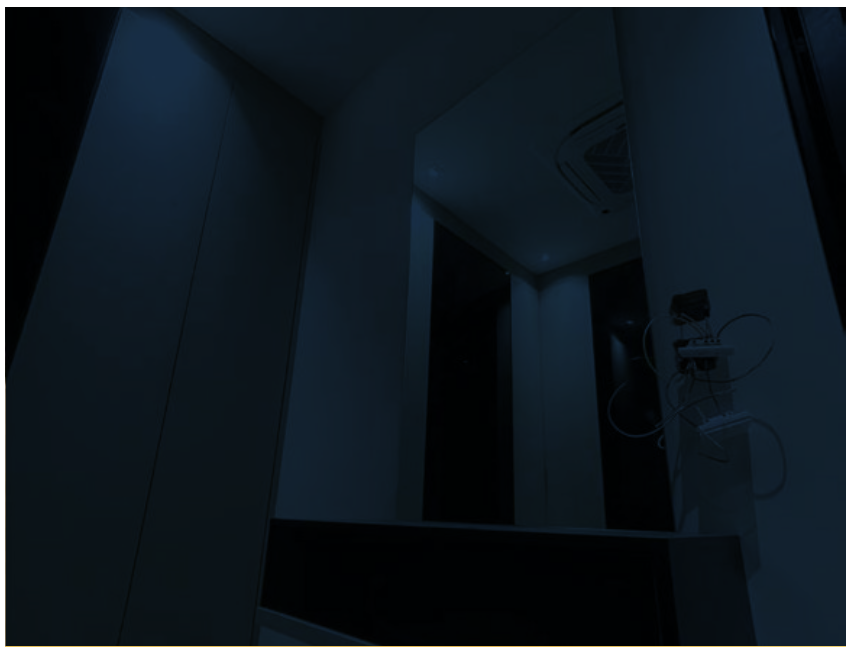
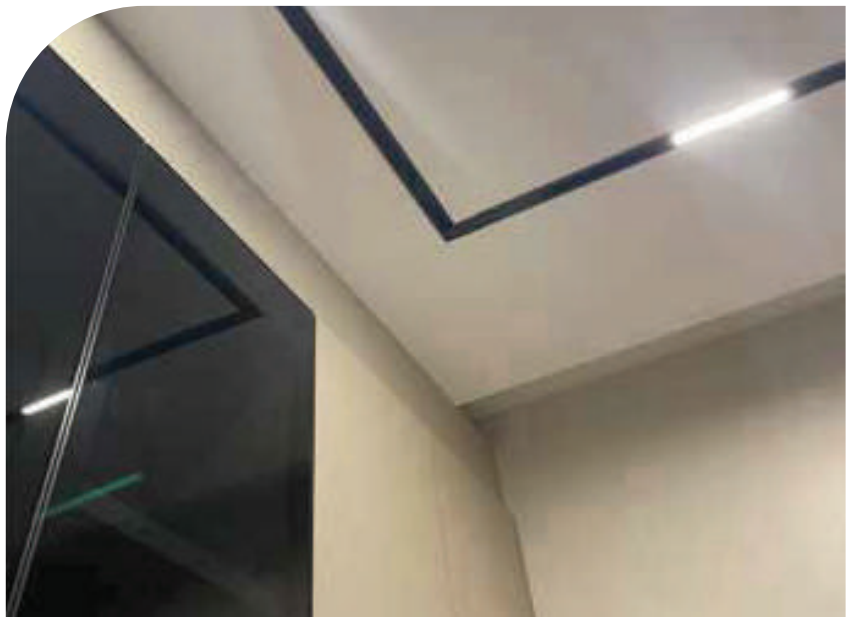


**Khalid and his wife envisioned a wardrobe that seamlessly blended style and functionality. With Castle expertise,**

**they received a bespoke wardrobe design that not only maximized storage but also added a touch of sophistication to their bedroom.**



مؤسسة معالم القلعة التجارية  
CASTLE LANDMARK TRADING EST.

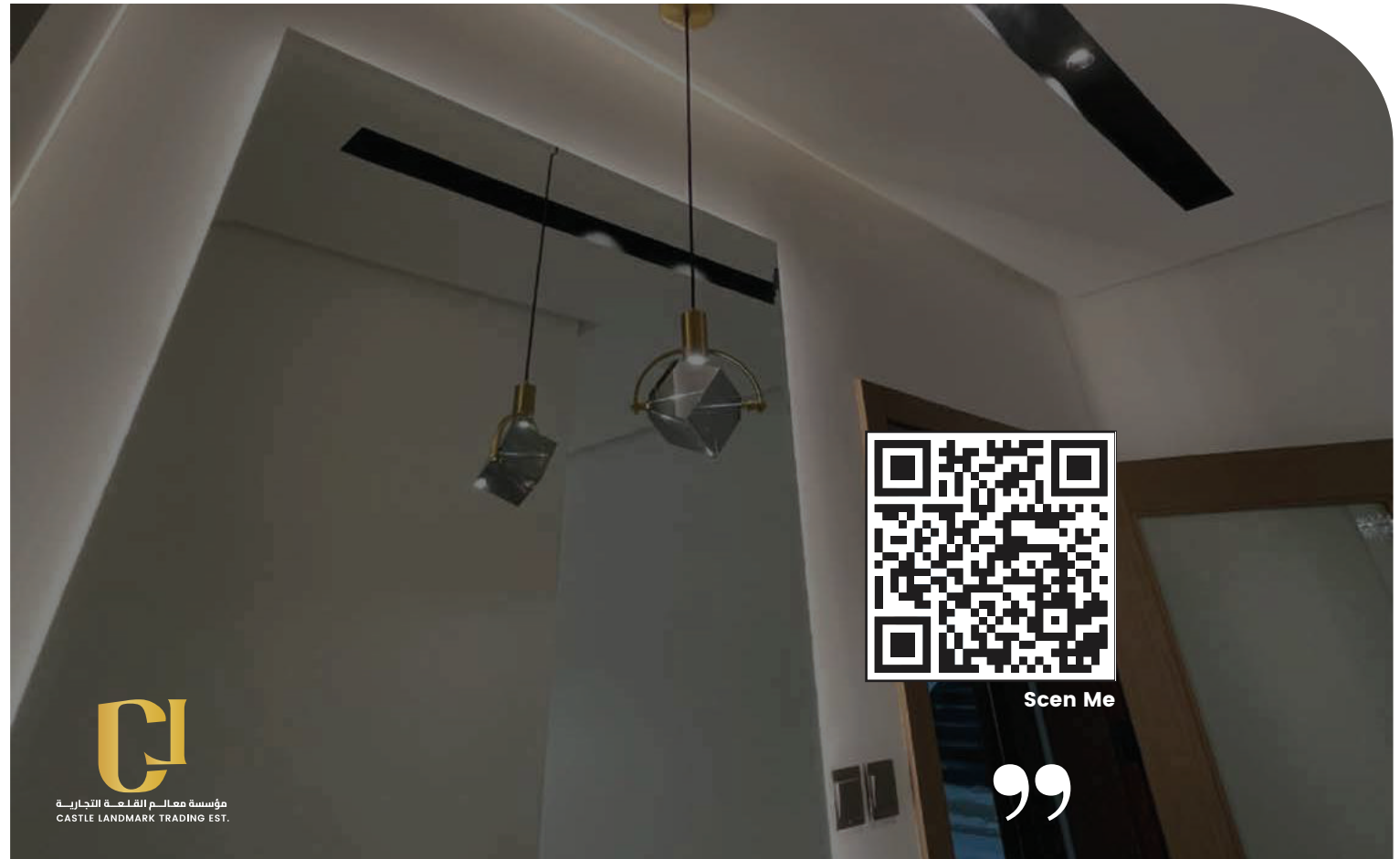


# PROJECT NO. 471, SAIHAT VANITY DESIGN

---

Saad, with a keen eye for detail and a taste for luxury, sought a washbasin design that would be the focal point of his bathroom.

We are Castle exquisite collection of washbasin designs exceeded his expectations, offering not just functionality but also a sense of indulgence. The sleek, modern lines and premium finishes transformed Saad's bathroom into a space that exuded elegance and sophistication, reflecting his unique style and personality.





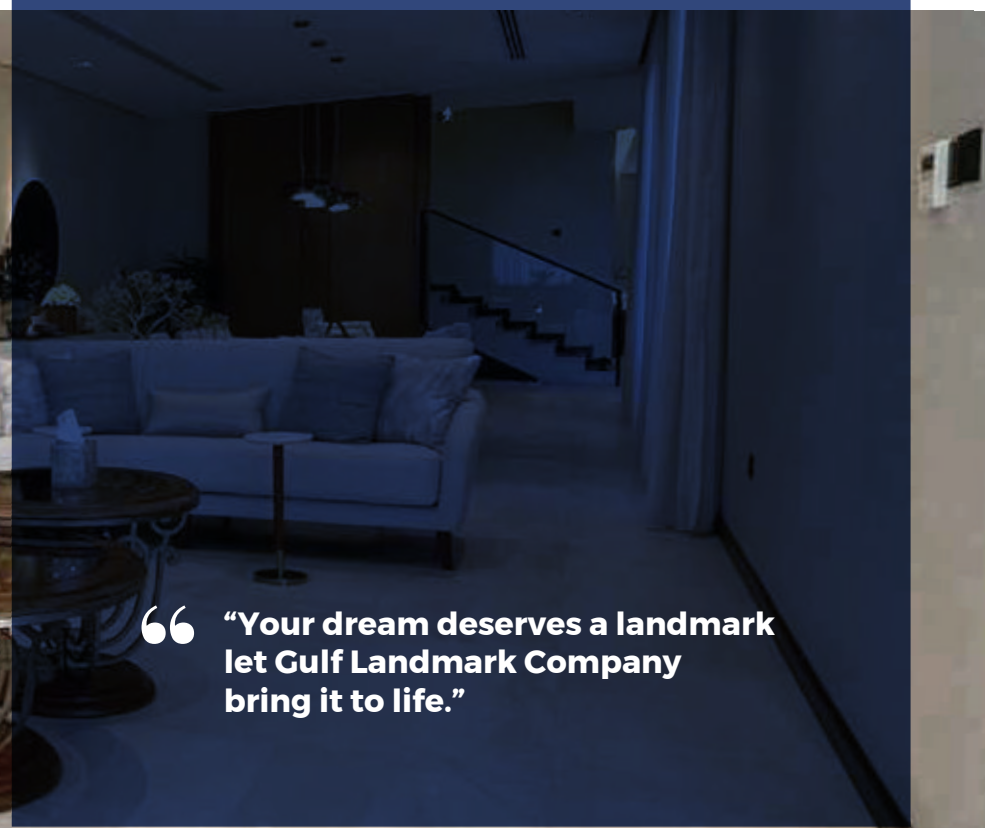
مؤسسة معالم القلعة التجارية  
CASTLE LANDMARK TRADING EST.



## PROJECT NO. 504, SAIHAT LIVING ROOM DESIGN

**Turid Al Ahmed's mother, a woman of grace and elegance had always dreamed of alving room that would be a neflection of her warmth and hospitality.**

**With her encouragement, she decided to turn her dream into reality and enlisted the help of US.....**



“Your dream deserves a landmark  
let Gulf Landmark Company  
bring it to life.”



مؤسسة معالم القلعة التجارية  
CASTLE LANDMARK TRADING EST.

## PROJECT NO. 504, SAIHAT

“

Every detail we craft is meant to inspire, last, and live with you.”



The design team listened attentively to her vision, understanding her desire for a space that was both welcoming and stylish. They carefully selected furnishings and decor that complemented her taste, creating a living room that exuded charm and sophistication.

When the project was complete, Abu Tur's mother was overjoyed. The living room was more than she had ever imagined, a testament to her son's love and thoughtfulness. It became a place where she could entertain with pride, knowing that every detail had been carefully chosen to reflect her personality and style.



مؤسسة معالم القلعة للتجارة  
CASTLE LANDMARK TRADING EST.

# PROJECT NO. 507, SAIHAT TV UNIT DESIGN



**Reema and her husband envisioned a TV unit that would be the focal point of their living room, combining style with functionality.**

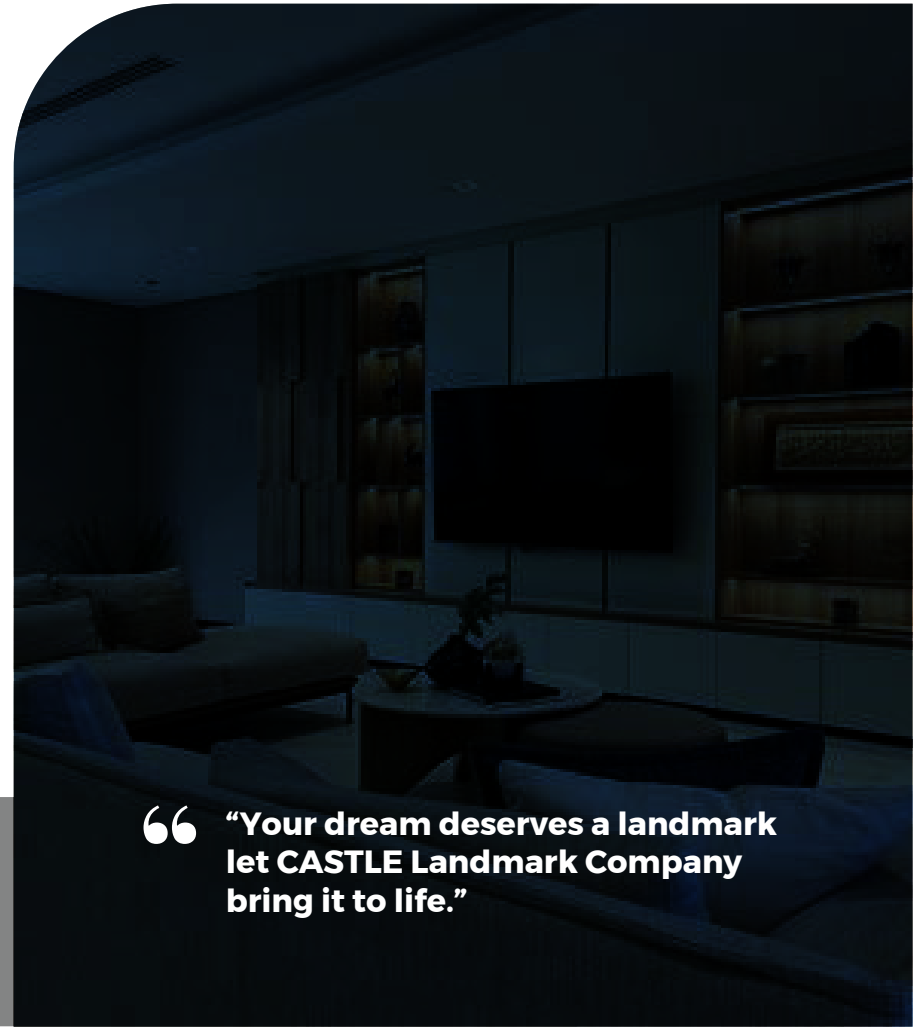
**We are Castle designs offered the perfect solution, with sleek, modern lines and ample storage space. The TV unit became a statement piece in their home, reflecting their shared vision for a space that was both inviting and practical.**



مؤسسة معالم القلعة التجارية  
CASTLE LANDMARK TRADING EST.



## PROJECT NO. 507, SAIHAT



“Your dream deserves a landmark  
let CASTLE Landmark Company  
bring it to life.”



مؤسسة معالم القلعة التجارية  
CASTLE LANDMARK TRADING EST.

## PROJECT NO. 511 , SAIHAT COFFEE CORNER DESIGN

**Youssef wanted to gift his daughter and her husband something special for their birthday, a thoughtful gesture that would bring them joy every day.**

**He decided to create a cozy coffee corner in their home, a place where they could unwind and create lasting memories.**

...



“Your dream deserves a landmark  
let CASTLE Landmark Company  
bring it to life.”



مؤسسة معالم القامة التجارية  
CASTLE LANDMARK TRADING EST.

## PROJECT NO. 504, SAIHAT



**“Every detail we craft is meant to inspire, last, and live with you.”**

**Youssef turned to Castle for help, knowing that their designs were not only stylish but also practical. The team worked with him to create a coffee corner that was tailored to his daughter and son-in-law's tastes, with comfortable seating, a stylish coffee maker, and shelves filled with their favorite blends.**

**When the birthday arrived, Youssef's gift was met with delight and gratitude. The coffee corner became a favorite spot in their home, a place where they could start their day with a cup of coffee and end it with meaningful conversations. Youssef's gift had not only brought them joy but had also brought them closer together, a reminder of his love and thoughtfulness.**



# PROJECT NO. 511, DAMMAM, ALORUBA KITCHEN DESIGN / ABDUR RAHMAN

The design emphasized a well-planned layout, ensuring easy movement and organization while incorporating ample storage and high-quality finishes. Every element—from the cabinets to the countertops—was selected to reflect durability, elegance, and comfort for daily family use.

The finished kitchen became the heart of the home, offering a perfect blend of practical convenience and timeless sophistication, showcasing Castle Landmarks' dedication to excellence in every project.







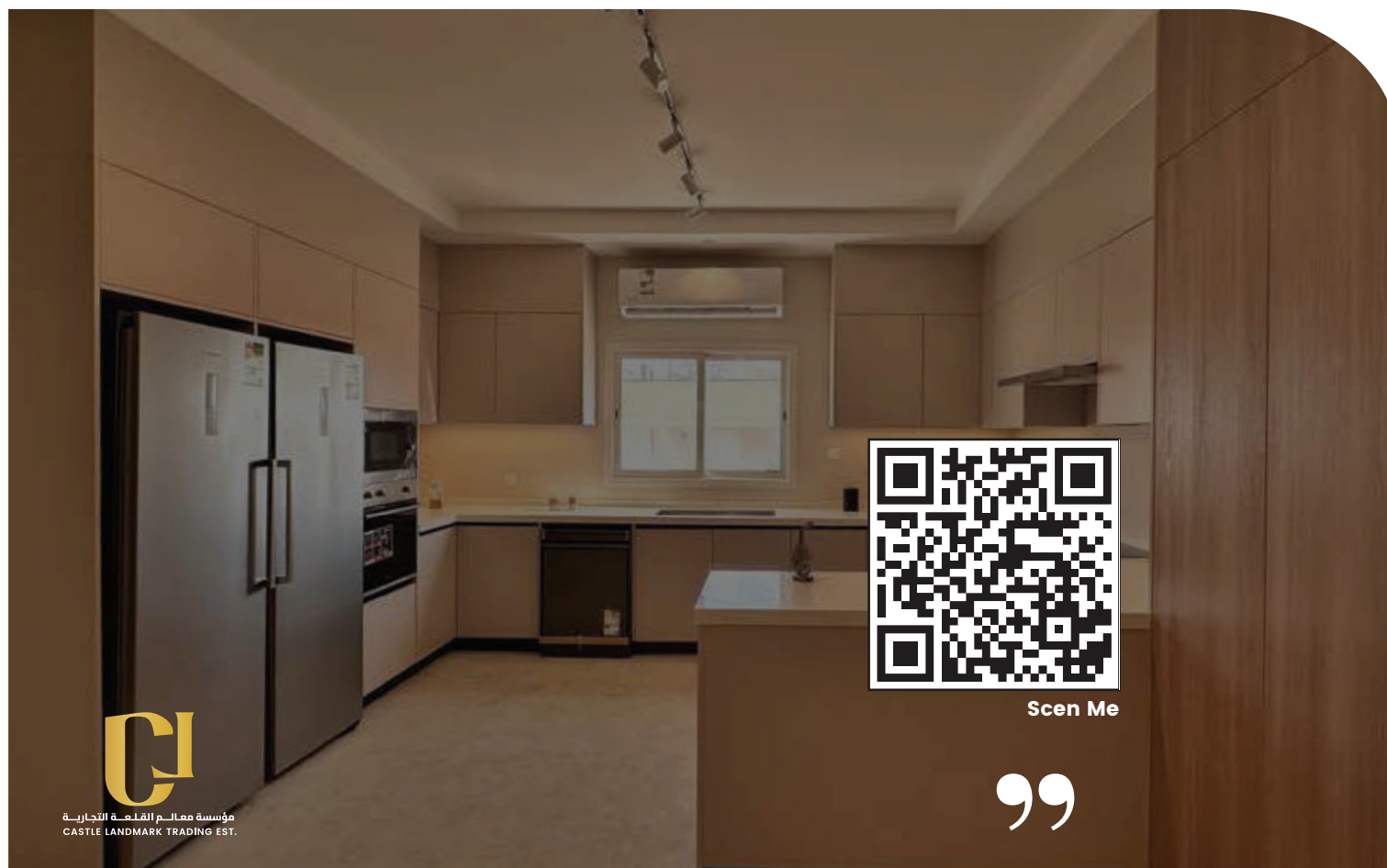
مؤسسة معالم القلعة التجارية  
CASTLE LANDMARK TRADING EST.



# PROJECT NO. 509, KHOBAR KITCHEN DESIGN

Project 509 was a kitchen design in Khobar that focused on creating a balance between modern elegance and everyday functionality.

The client required a design that was practical for daily use yet stylish enough to serve as a central gathering point for family and guests. To achieve this, Castle Landmarks implemented a clean layout with efficient storage solutions, complemented by premium finishes and durable materials.



## PROJECT NO. 509, KHOBAR

“

Every detail we craft is meant to inspire,  
last, and live with you.”



To achieve this, Castle Landmarks implemented a clean layout with efficient storage solutions, complemented by premium finishes and durable materials.



مؤسسة معالم القلعة التجارية  
CASTLE LANDMARK TRADING EST.



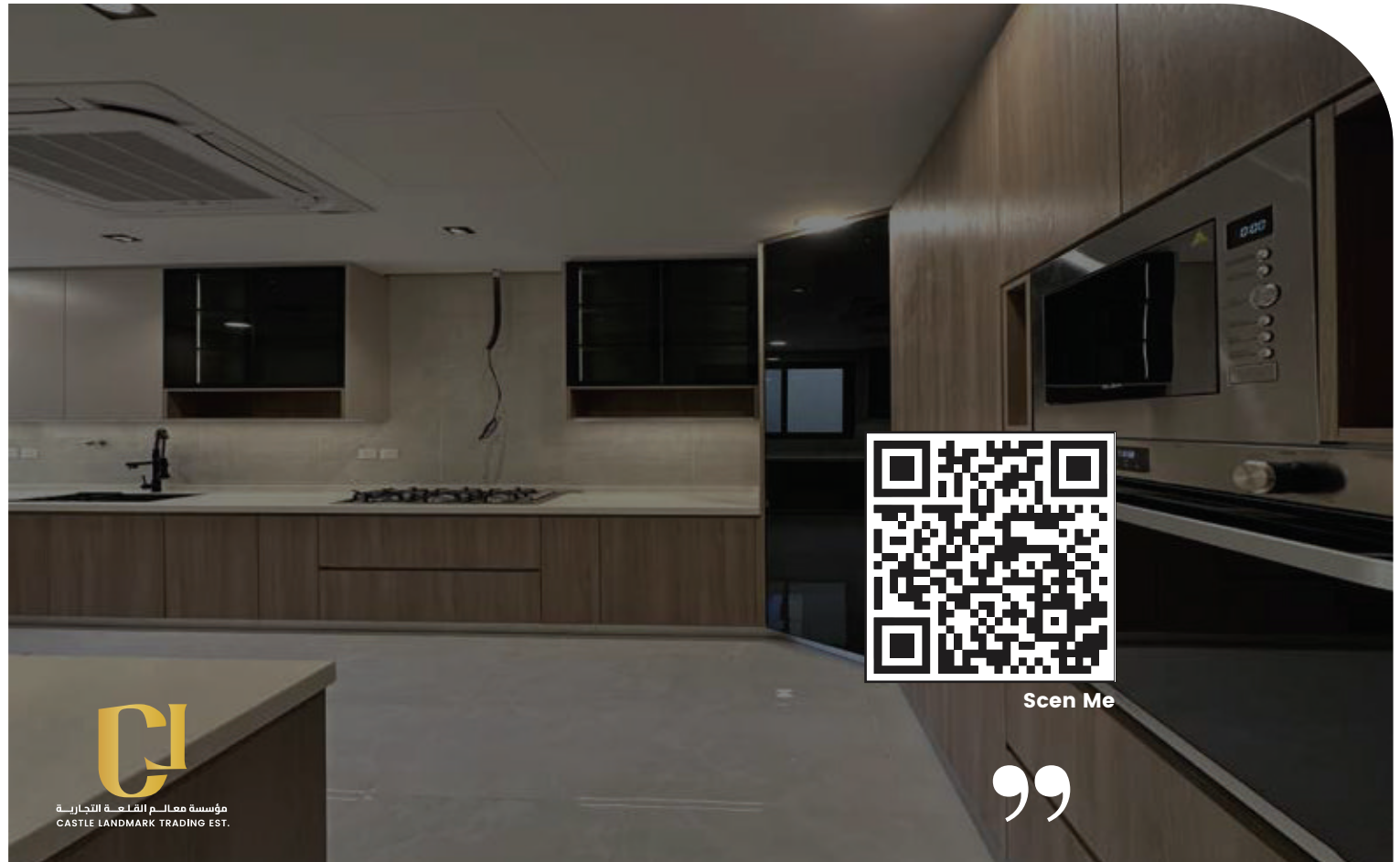


# PROJECT NO. 473, DAMMAM KITCHEN DESIGN/ OMAR AHMED

---

Project 473 was a kitchen design completed for our client, Omar Ahmed, in Dammam. The goal was to create a space that combined functionality, modern style, and family comfort.

The design featured a smart layout that maximized efficiency and storage while keeping the kitchen open and welcoming. High-quality finishes and durable materials were carefully selected to ensure the kitchen not only looked elegant but also stood the test of time.







مؤسسة معالم القلعة التجارية  
CASTLE LANDMARK TRADING EST.



# PROJECT NO. 522, SAIHAT FULL VILLA DESIGN/ AKILAH



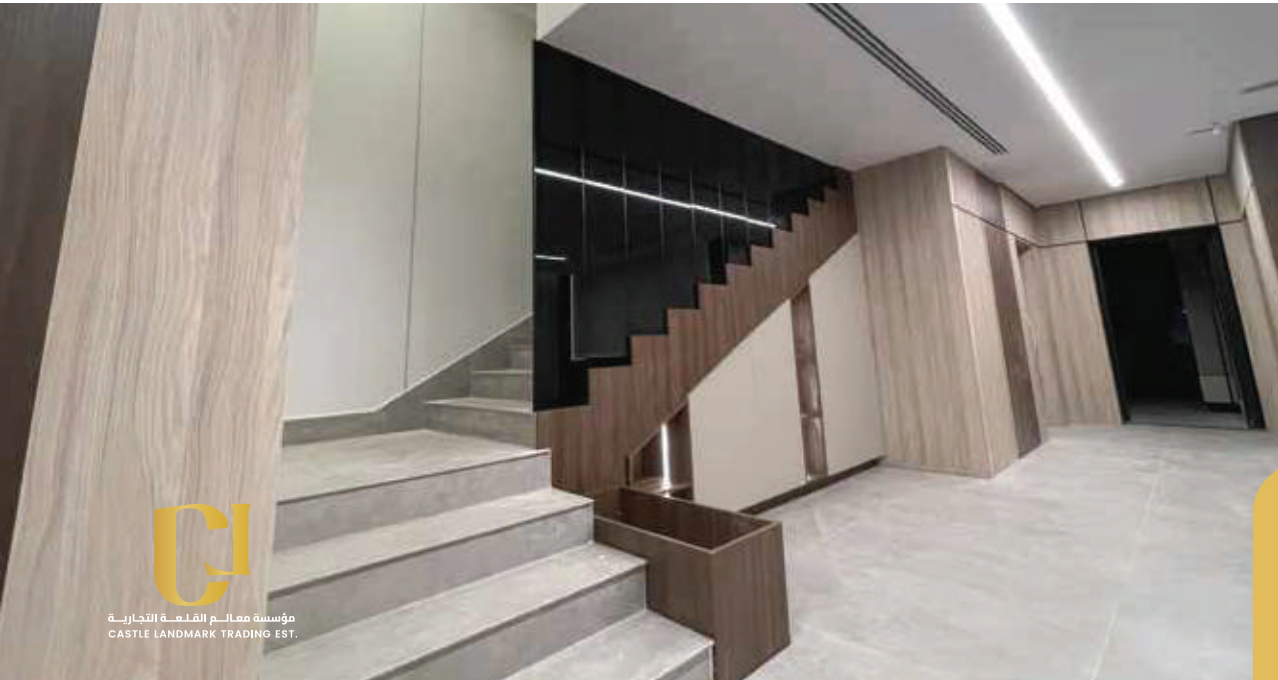
**Project 522 in Saihat was a complete villa design carried out for our valued client, Akilah. Castle Landmarks was tasked with designing two bedrooms, two vanities, two wardrobes, and additional decorative elements that brought the entire villa together in harmony.**

**The bedrooms were crafted as serene sanctuaries, balancing comfort and elegance with designs that encourage both relaxation and style.**



مؤسسة معالم القلعة التجارية  
CASTLE LANDMARK TRADING EST.

## PROJECT NO. 522, SAIHAT



“Every detail we craft is meant to inspire, last, and live with you.”

The wardrobes offered intelligent storage solutions, customized to meet the client’s lifestyle needs while maintaining a modern and seamless look. The vanities were designed with fine attention to detail, combining practicality with a touch of luxury. To complete the project, we introduced decorative features and finishing touches that elevated the villa’s overall ambiance, creating a cohesive flow throughout the spaces.

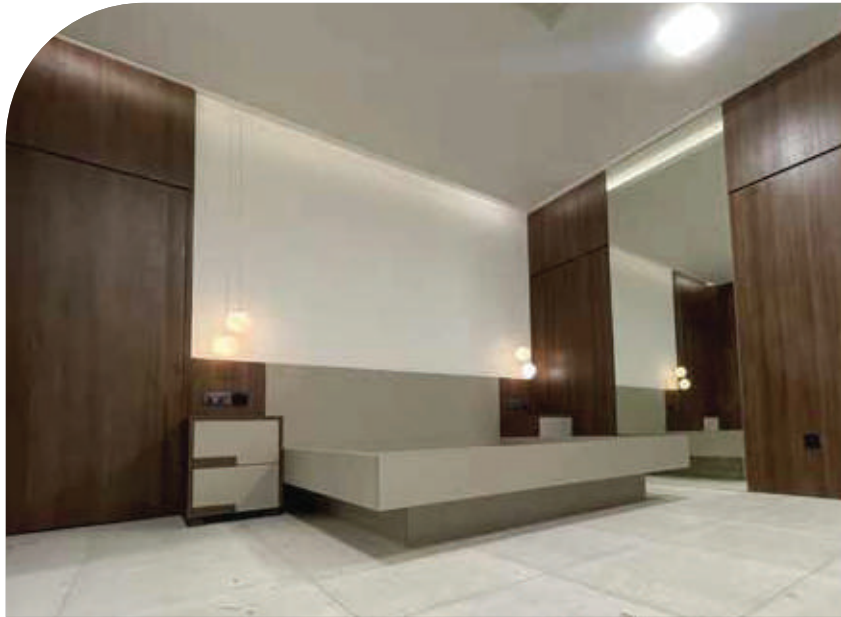
The outcome was a home that reflected both personal comfort and timeless sophistication, standing as a true example of Castle Landmarks’ vision—turning houses into landmarks of design and living.

## PROJECT NO. 522, SAIHAT









مؤسسة معالم القلعة التجارية  
CASTLE LANDMARK TRADING EST.

# PROJECT NO. 514, QATIF FULL VILLA DESIGN/ ALI JAWAD

**Project 514 was a full villa design for a distinguished client in Qatif.**

**Castle Landmarks was entrusted with creating elegant and functional wardrobes, bedrooms, and washbasins, each crafted to enhance both beauty and practicality.**



“Your dream deserves a landmark  
let CASTLE Landmark Company  
bring it to life.”



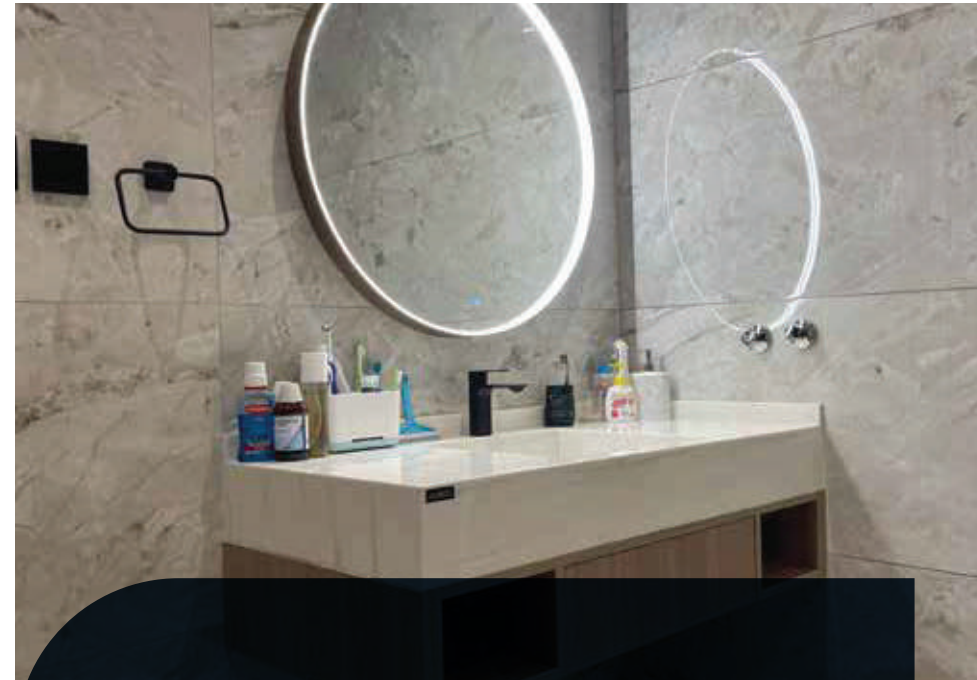
مؤسسة معالم التجارة  
CASTLE LANDMARK TRADING EST.



## PROJECT NO. 514, QATIF

“

Every detail we craft is meant to inspire, last, and live with you.”



The bedrooms were designed with comfort and sophistication in mind, providing a peaceful retreat while reflecting the homeowner's personal style.

The wardrobes offered intelligent storage solutions with a seamless modern finish, ensuring both organization and elegance. For the washbasins, we introduced sleek, high-quality materials and refined details that elevated the bathrooms into stylish and functional spaces.



مؤسسة معالم القلعة التجارية  
CASTLE LANDMARK TRADING EST.

## PROJECT NO. 514, QATIF

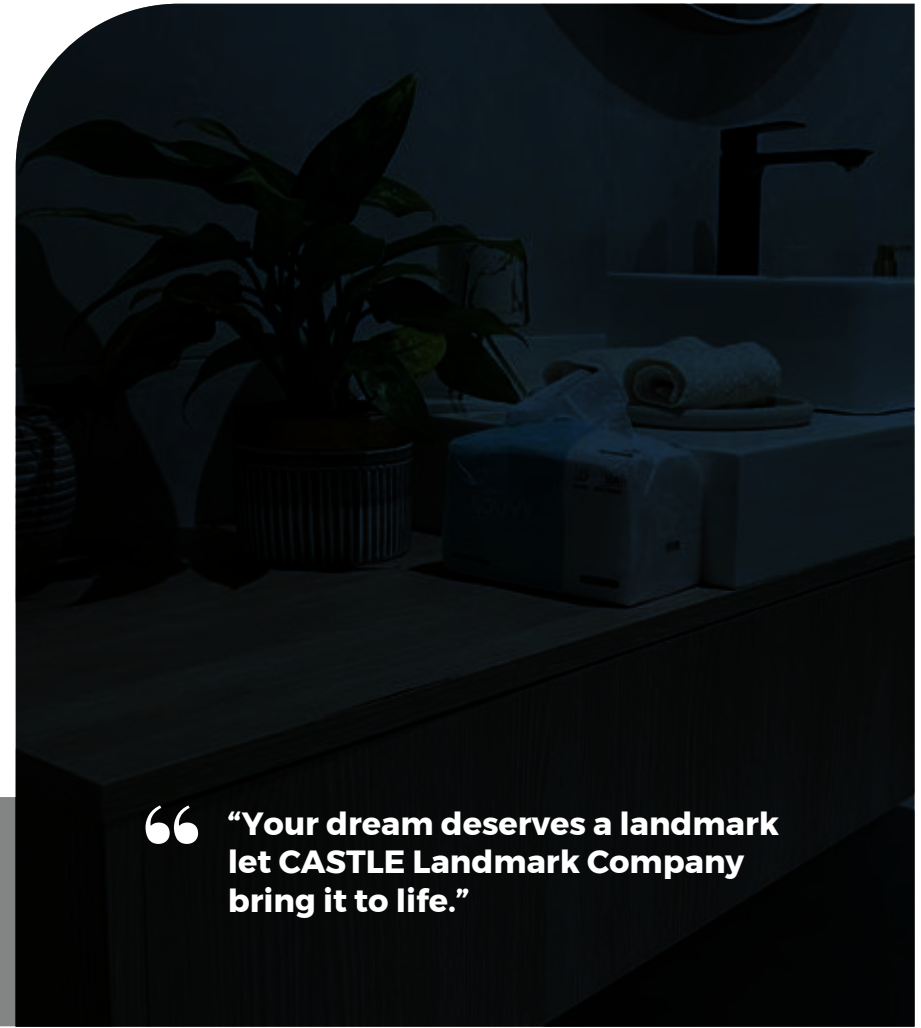


The project stands as a showcase of Castle Landmarks' commitment to blending aesthetic excellence with everyday functionality, turning the villa into a home filled with timeless design and refined living.



مؤسسة معالم القلعة التجارية  
CASTLE LANDMARK TRADING EST.

## PROJECT NO. 514, QATIF



“Your dream deserves a landmark  
let CASTLE Landmark Company  
bring it to life.”



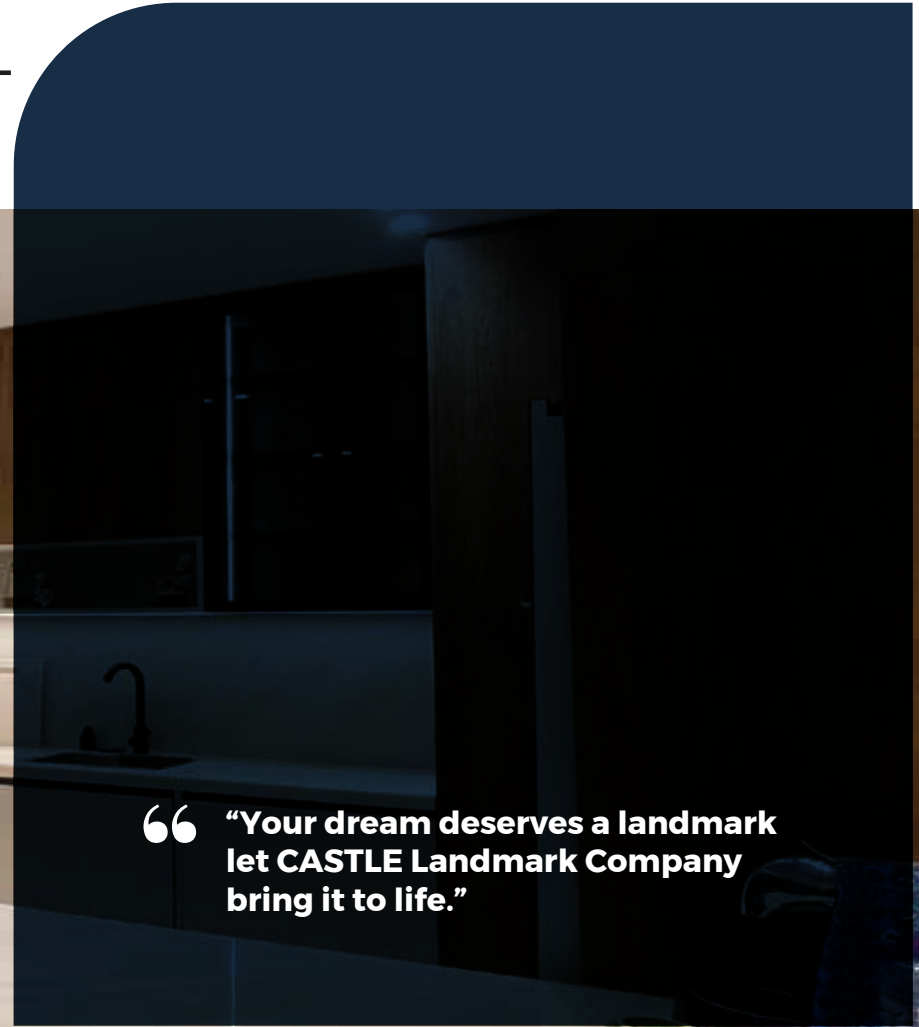
مؤسسة معالم القامة التجارية  
CASTLE LANDMARK TRADING EST.



# PROJECT NO. 515 , KHOBAR FULL VILLA DESIGN/ AL HAMRA

Project 515 was a complete villa design in the prestigious Al Hamra district of Khobar. The client entrusted Castle Landmarks with designing their kitchen, bedrooms, and wardrobes, aiming for a balance of functionality, comfort, and timeless elegance.

The kitchen was designed with a modern layout, maximizing efficiency while creating a warm and inviting atmosphere for family gatherings.



“Your dream deserves a landmark  
let CASTLE Landmark Company  
bring it to life.”



مؤسسة معالم القامة التجارية  
CASTLE LANDMARK TRADING EST.

## PROJECT NO. 515 , KHOBAR “



**“Every detail we craft is meant to inspire, last, and live with you.”**

**The bedrooms reflected a serene ambiance with customized design elements that combined comfort with luxury. For the wardrobes, we focused on smart storage solutions with a refined aesthetic, ensuring that practicality and elegance worked hand in hand.**

**The result was a harmonious villa interior that perfectly reflected the client’s lifestyle—an inspiring space that stands as a true landmark of design and living.**

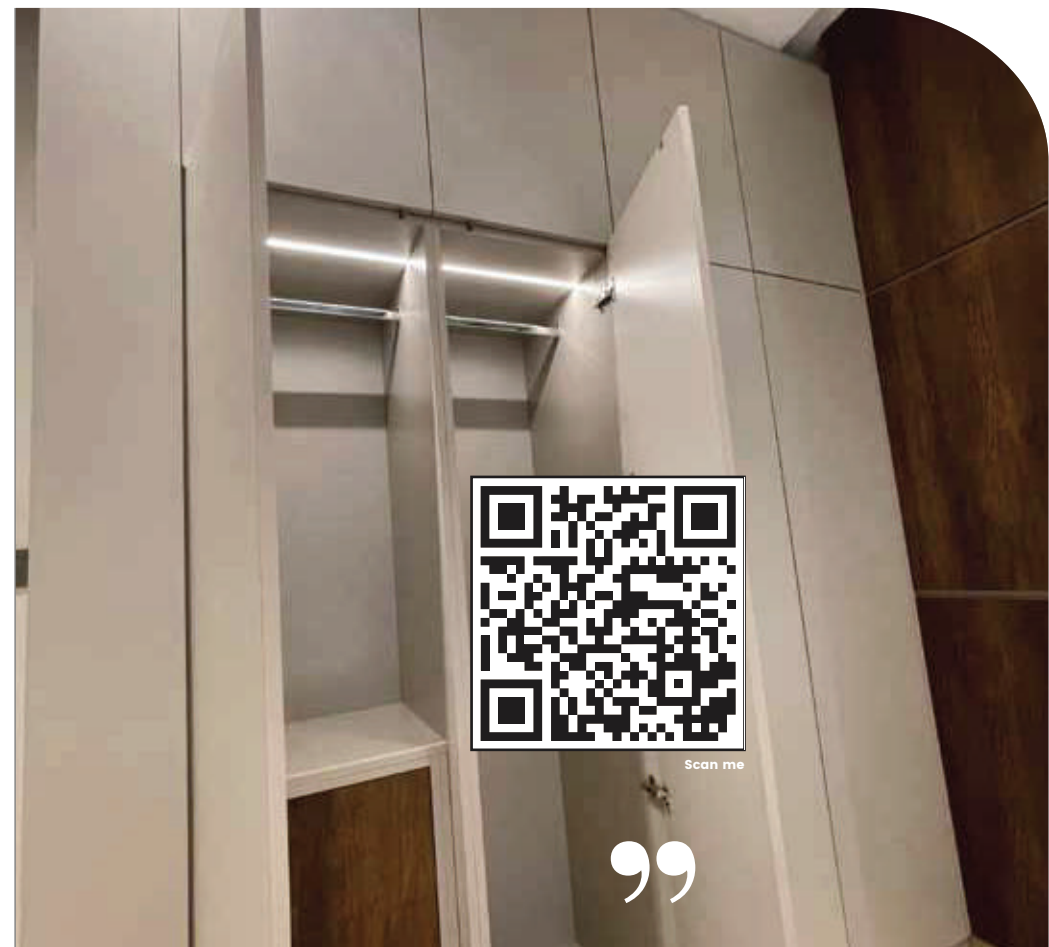






# PROJECT NO. 515 , KHOBAR

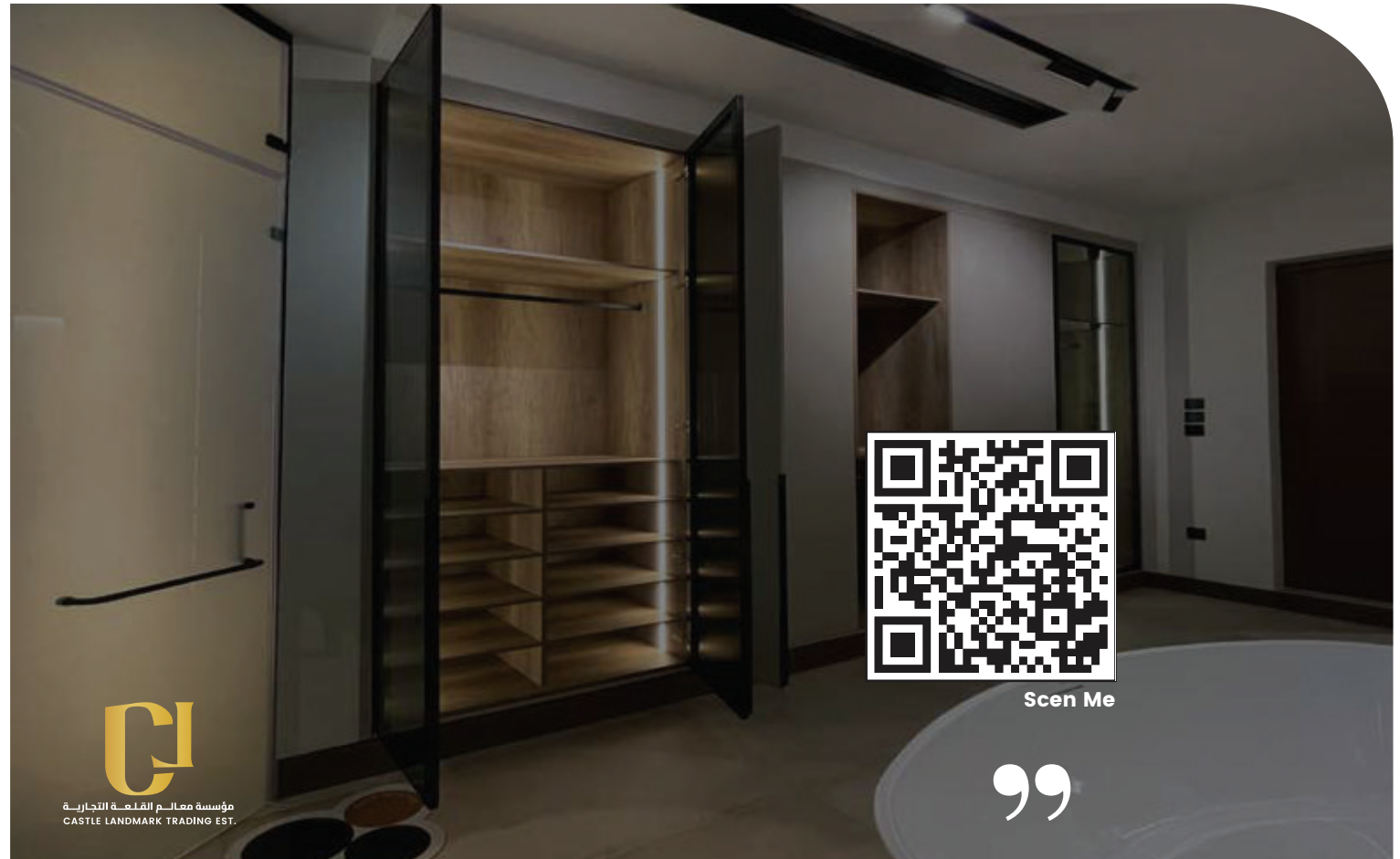
---



# PROJECT NO. 503, KHOBAR WARDROBE AND VANITY DESIGN

At Castle Landmarks, every project is an opportunity to blend functionality with elegance. Project 503 in Al Rashid, Khobar, was a complete wardrobe and vanity design tailored to maximize space while reflecting the client's lifestyle.

The goal was to create a wardrobe that combined organized storage with a sleek, modern look, ensuring every detail—from drawers to finishes—was practical yet stylish. The vanity was designed to complement the space, providing a balance of luxury and everyday usability.



# PROJECT NO. 503, KHOBAR





# PROJECT NO. 503, KHOBAR



# PROJECT NO. 379, QATIF KITCHEN DESIGN

**During the consultation, Mrs. Yasser expressed her ideas and preferences to the Castle team.**

**She was impressed by their attentiveness and their ability to understand her vision. They discussed various design options, materials, and layouts, and together, they created a design that exceeded Mrs. Yasser expectations.**











مؤسسة معالم القلعة للتجارة  
CASTLE LANDMARK TRADING EST.

# PROJECT NO. 379, QATIF



We don't just design spaces,  
we create landmarks inside your home.



Throughout the design and installation process, the **Castle** team kept Mrs. Yasser updated and involved, ensuring that every detail was to her liking. When the day finally arrived to reveal her new kitchen, Mrs. Yasser was thrilled.

The sleek, modern design, coupled with the functionality she needed, made her kitchen a true masterpiece.



**Mrs. Yasser was not only delighted with her new kitchen but also with the exceptional service she received from Castle**

**She knew that she had made the right choice and would recommend Castle to anyone looking for a kitchen that was not only beautiful but also a joy to use.**